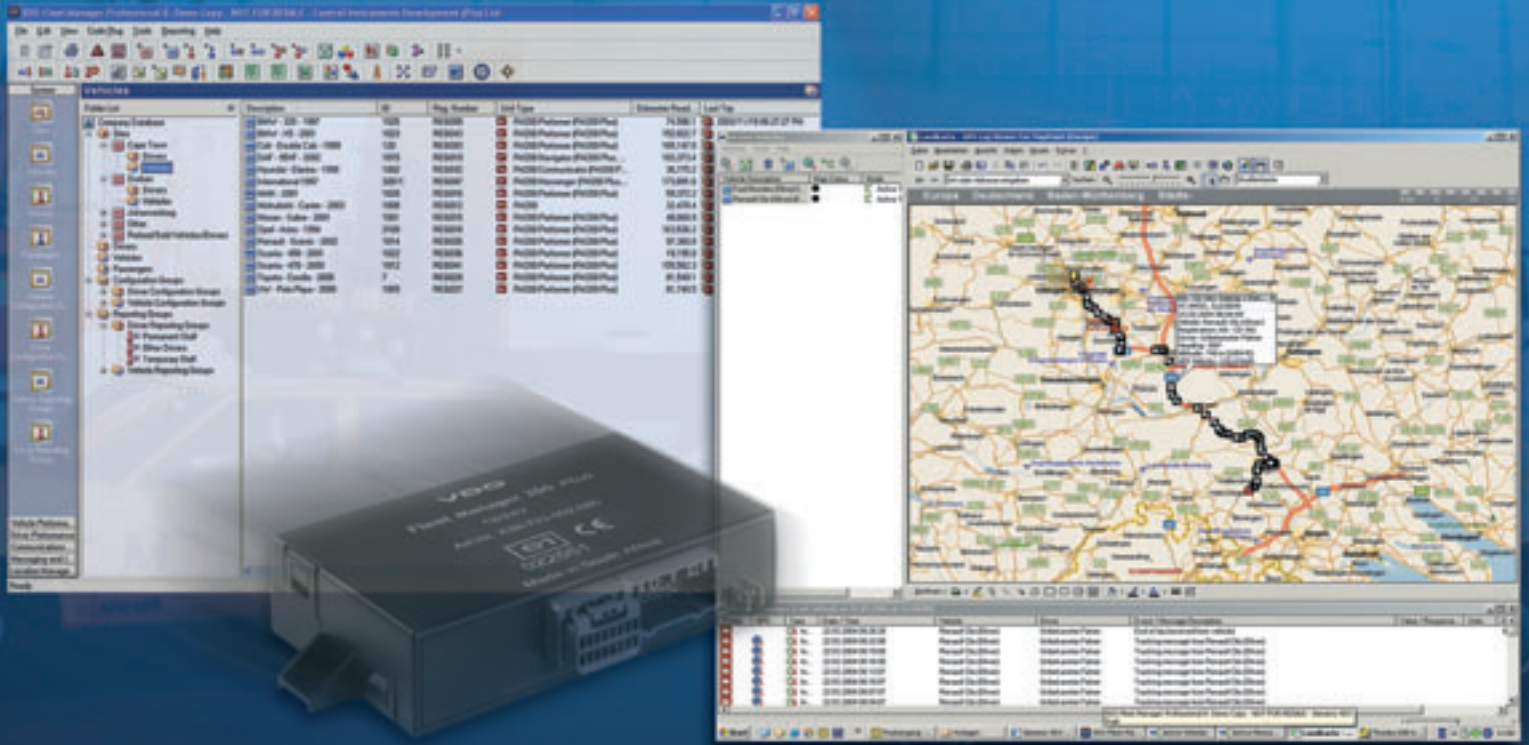




Handling a complex world.



# Fleet Manager Professional v8

## Professional solution for your office

The FM Professional software solution is an extensible and modular platform for your office PC or network. Fully internationalized, this package provides extensive management reporting and supports multiple data transfer options. The software is developed using industry standard tools, has an intuitive user-interface and full documentation and on-line help is provided.

## Powerful functionality

The software provides you with the power to manage your fleets and use the information recorded by all the Fleet Manager products in the VDO range. Functionality is included for:

- driver & vehicle performance management
- location management & tracking
- real-time exception reporting and
- communication with drivers
- jobs and navigation

## Extensible platform

A range of software extensions are available to expand the benefit you derive from the VDO Fleet Manager products, and ensure an ongoing return on investment. Examples of additional modules include Driver Safety, Costing, Trailer Management and more.

A software development kit (SDK) is also available for customization by third parties.

## New features in v8

FM Professional 8 includes

- full support for GPRS (in addition to the existing support for GSM, SMS, DECT and code-plug)
- navigation and tracking enhancements
- a new reporting engine for faster reporting
- support for new devices
- new look 'n feel and improved usability
- enhancements to data transfer functionality to reduce and help control communication costs





# Fleet Manager Professional v8

## Features\*

### Vehicle and Driver Performance Management

- Trip Data Recording ▶ Get objective trip information including date and time, distance, hours, speed (real RPM) or speed (GPS) trip start and end time, depart/arrive time, idle and standing time, driver ID, etc.
- Performance reports ▶ Report on vehicle utilization and driver performance
- Standard driving violations ▶ Identify standard driving errors, incl. over speeding, over revving, green band driving (low and high), harsh braking, harsh acceleration, excessive idling and overtime driving
- Customised events ▶ Monitor specific user-defined events such as driver door opening, no-go zone entered, hazard lights activated, refrigerator temperature, etc.
- Second-by-second interval (Tacho) data ▶ Profile inputs (e.g. speed, RPM, brake lights) recorded every second, and provides valuable in-depth profile graph for accident analysis.
- Driver identification & access control ▶ Identify drivers and control access to vehicles using optional starter interrupt

### Location & Movement Management

- Active and passive tracking options ▶ Track vehicles in real-time  
▶ Request the current status & position of vehicles  
▶ Review the route taken after the trip data has been downloaded
- Manage Locations ▶ Add customer, supplier, no-go zones or any other locations  
▶ Use reports to highlight visits to locations, including arrival and departure times, and duration of visit.
- Routes ▶ Enter stops, planned time of start and planned duration of each stop and measure deviations  
▶ Give job activity sheets to your drivers.
- Active Events ▶ Get real-time notification when selected standard or user-defined events occur. (E.g. cargo door opening in a no-go zone, driver arrived at customer location, etc.)

### Communication

- Downloading/uploading to/from vehicle With included GSM/GPRS Modem:
  - ▶ Remotely download and upload data from and to OBC
  - ▶ Actively track the vehicle
- Messaging & jobs Send messages and jobs to your drivers, and get their responses using a cost-effective method

## System Requirements

- Processor: Pentium III 450 Mhz or higher (Pentium III 850 Mhz recommended)
- Memory: 256 Mb RAM (512 MB recommended)
- Hard disk space: At least 1GB
- Drive: CD-Rom drive
- Operating system: Windows 2000® or XP Professional®

## Database technology

The system uses Microsoft SQL database technology

## Software Set

- Fleet Manager Office FM Professional V8.0
- Order number: X39-723-002-086
- Set includes: CD-ROM

## Accessories (not included with set)

- FM Download pod for data keys  
Order number: X39-723-002-009
- FM DECT Base Station  
Order number: X10-723-002-011



Dealer

\* features vary according to type of-board computer installed in vehicle.