



How to use the FM Dealer Utility

Introduction

The FM100 and FM200 make use of Code Plugs for downloading Trips and for uploading Device Drivers and Configurations to vehicles.

The FM Dealer Utility encapsulates all functionality associated with the maintenance of Code Plugs.

It installs both as a Stand-Alone program, and as an Extension to the Fleet Manager software, from one, integrated, install-set.

Install-set

The installation set of the FMDealer can be found on the Fleet Manager CD under:
“\Other\FM Dealer Utility\Setup.exe”

The installation set will create a shortcut to the FM Dealer under *START -> PROGRAMS -> FMDEALER*.

It will also create an extension to your Fleet Manager Software, which can be run from the Fleet Manager's *TOOLS -> DEALER UTILITY* menu.

Password Protection

The FM Dealer utility can be password protected for access-control purposes. This should be done as soon as possible after installation, if security is required.

Function Descriptions

Clicking on the menu items in the FM Dealer will perform the following functions:

File

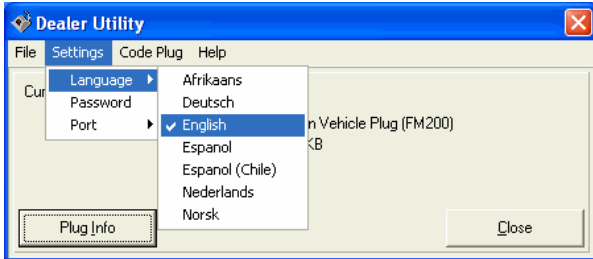
Close

Closes the FM Dealer program.

Settings

Language

Selects the FM Dealer operating language.



Password

Allow you to enter a new password or change an existing password. When doing the latter, you will need to specify your current password for the operation to complete. Specifying and confirming a new *blank* password will remove password protection.



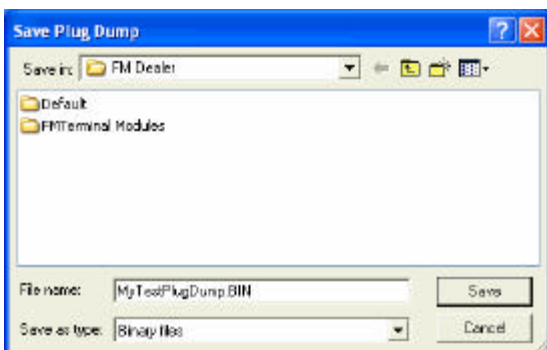
Port

Select the Communication Port onto which your code-plug reader is installed. This option is not available on the FM Dealer Extension since it uses the Fleet Manager port setting.

Code Plug

Dump Plug

Copy (dump) the contents of a Code Plug to a Binary file.



Enter a file name and click *Save* to dump the contents of the Code Plug to the file.
The file can be restored (loaded back) to a similar plug by using the *Restore Plug* command.

Restore Plug

Restore a Binary file (created by the *Dump Plug* command) to a code plug. Please note that the plug used must be of the same size as plug dump file. Restoring a 256kB file to a 128 byte plug, for example, may corrupt the plug.



Format Plug

Vehicle Plug

Format a FM100 or FM200 data plug to its factory settings. The plug may be initialised to a vehicle ID after this operation.

Driver Plug

Format a driver ID plug to its factory settings. The plug may be initialised to a driver ID after this operation.

Co-Driver Plug

Format a co-driver ID plug to its factory settings. The plug may be initialised to a co-driver ID after this operation.

Passenger Plug

Format a passenger plug to its factory settings. The plug may be initialised to a passenger ID after this operation.

Device Drivers

Create a Device Driver Plug. A Device Driver Plug is used to load device drivers onto multiple vehicles. Loading the device drivers is discussed later.

System Override

Create a System Override plug. This plug may be used to override engine protection.

Calibration Plug

Format a plug to a RPM- or Speed- calibration plug and initialises it to its default values.

Diagnostic Plug

Format a plug to a GPS or GSM/DECT or TrailerID diagnostic plug. With ignition switched on, inserting these plugs will indicate GPS, GSM/DECT or TrailerID activity.

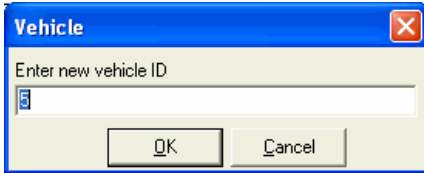
Engine-hours Plug

Format a plug to an Engine-hours plug. The plug may be initialised with a specific value of engine hours.

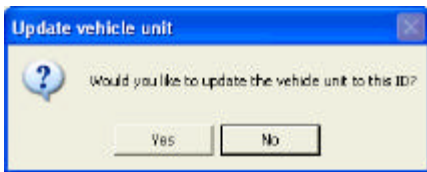
Initialise Plug

Set Vehicle ID

Initialise a FM100 or FM200 vehicle plug to a specific vehicle ID.



You may also elect to update the FM200 vehicle unit to this new ID.



NB: Do *not* answer yes to this question unless you specifically want to change the vehicle ID!

Set Driver ID

Initialise a driver plug to a specific driver ID.

Set Co-Driver ID

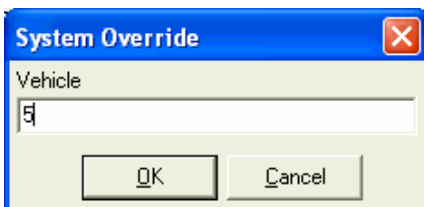
Initialise a co-driver plug to a specific co-driver ID.

Set Passenger ID

Initialise a passenger plug to a specific passenger ID.

System Override

Initialise a system override plug to a specific vehicle ID.



Set Engine-hours

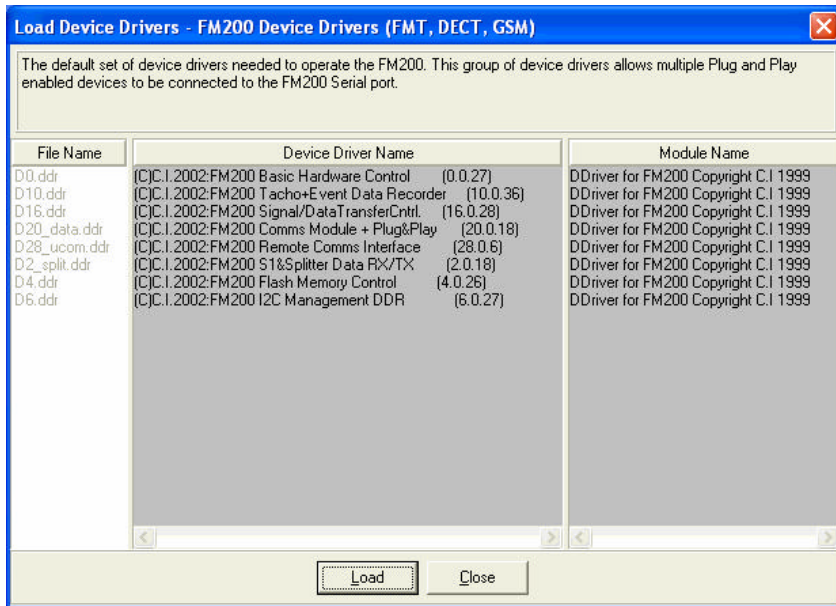
Initialise an Engine-hours plug to a specific value.

Load Device Drivers

This function allows you to load new device drivers (DDRs) to the FM200 on-board-computer. It also allows you to load new device driver modules (DDMs) to the FM Terminal (if you have one connected).

FM200 Device Drivers (FMT, DECT, GSM)

Use this set to update the device drivers on your FM200.



FM Terminal: Modules

Use this set to update the device driver modules on your FM Terminal.

Please Note: It is vital to “wake up” the FM Terminal before inserting the newly created FM Terminal plug into the FM200. This is done by switching the vehicle ignition on, and then off, and waiting a few seconds. The FM Terminal screen will come on and display a warning message. You may now proceed to load the new modules.

Load Config

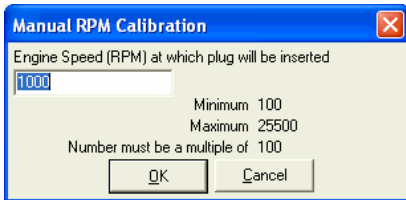
Basic Config

Load a basic configuration onto the vehicle unit. This allows the FM200 to start logging data without first having to install the Fleet Manager software.

Calibrate Plug

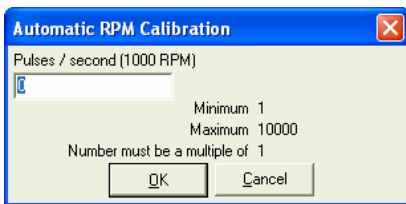
Manual

Allows manual RPM- or Speed- calibration to be done on the vehicle. Use a previously formatted RPM-calibration or Speed-calibration plug.



Automatic

Allows automatic RPM- or Speed- calibration to be done on the vehicle. Use a previously formatted RPM-calibration or Speed-calibration plug.



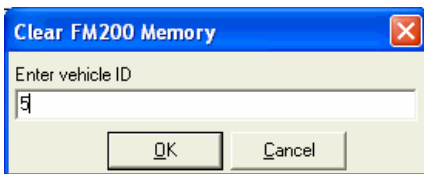
Diagnostic

Allows a diagnostic calibration plug to be created. Use a previously formatted RPM-calibration or Speed-calibration plug. With ignition switched on, inserting these plugs will indicate RPM or Speed activity.

Clear Unit

Clear FM200 Memory

Enter the vehicle ID and click OK. Insert the plug into the vehicle to clear the FM200 memory.



Clear FM100 Memory

Use this option to clear the FM100 memory.

Clear Device Drivers (FM200)

Use this option to clear only the Device Drivers from the FM200.

Multi Plug

Set to Multi Plug

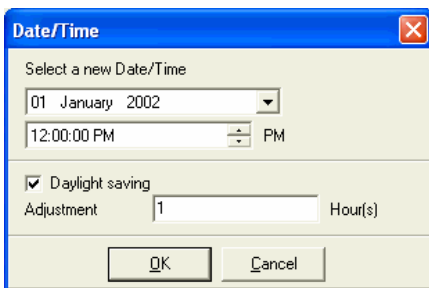
Use this option to initialise a plug to a multi-plug (also known as orphan-plug). Only a data plug should ever be set to a multi-plug.

Restore to default

Use this option to remove the multi-plug status from the plug, and thereby restore it to its previous plug-type.

Set Date/Time

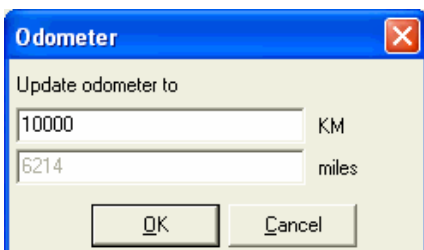
Set the time on the plug, for upload to the vehicle unit. Remember to insert the plug into the vehicle immediately, or allow for a few minutes delay by increasing the clock artificially.



The screenshot shows a dialog box titled "Date/Time" with a close button (X) in the top right corner. The text "Select a new Date/Time" is displayed. Below this, there is a date selection field showing "01 January 2002" and a time selection field showing "12:00:00 PM" with "PM" to its right. A "Daylight saving" checkbox is checked, and below it is an "Adjustment" field with the value "1" and the unit "Hour(s)". At the bottom, there are "OK" and "Cancel" buttons.

Set Odometer

Set the vehicle odometer. Insert the plug into the vehicle to complete the operation.

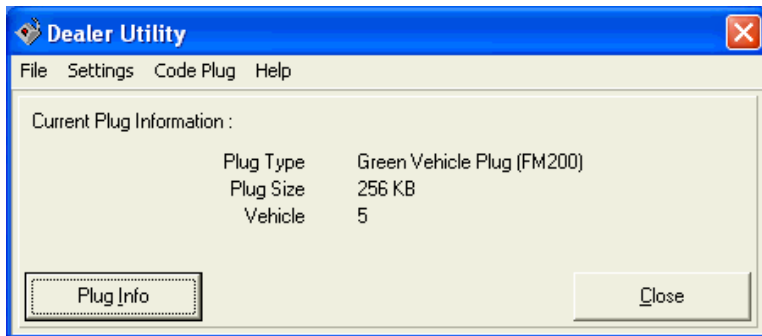


The screenshot shows a dialog box titled "Odometer" with a close button (X) in the top right corner. The text "Update odometer to" is displayed. Below this, there are two input fields: the first contains "10000" and is labeled "KM", and the second contains "6214" and is labeled "miles". At the bottom, there are "OK" and "Cancel" buttons.

Plug Info

Plug Info

Displays general plug information on the main form.



Device Driver Info

Displays Device Driver information for a FM200 Data plug or a Device Driver plug.

