



## Getting Started with Fleet Manager 2002

---

### Requirements

This document explains how to begin using the Fleet Manager 2002 application. You must install the Fleet Manager 2002 software before commencing with the steps in this document. By following the steps in this document, you will be able to view information recorded by one of your FM100 or FM200 on-board computers in **approximately 20 to 25 minutes**.

---

### Shortcuts

The Fleet Manager 2002 install program creates a number of shortcuts in your Start Menu. These shortcuts are created in the Start Menu folder you specified during the installation process (by default VDO Fleet Manager 2002). You can locate these shortcuts by clicking on the Start button in the bottom left-hand corner of your desktop, clicking on the Programs folder in the Start Menu and then clicking on the VDO Fleet Manager 2002 folder.

---

### Documentation

You will notice that the first item in the Fleet Manager Start Menu folder is called Documentation. It opens a web page off the Fleet Manager CD-ROM that provides links used to install that Adobe Acrobat viewer, Microsoft Word viewer and Microsoft PowerPoint viewer needed to view the documentation. If you need to install any of these viewers, clicking the relevant link will launch a setup program that will install it for you.

The remainder of the web page forms a table of contents to the documents on the Fleet Manager CD-ROM. These are presented in Adobe Acrobat format and many are also presented in their native format, for example Microsoft Word. If you merely wish to view the documentation on the screen you can use the Adobe Acrobat format or the native format. However, if you will be printing the documentation, better results can be obtained by using the native format of the document.

Please remember that the Fleet Manager CD-ROM must be in your computer's CD-ROM drive before you can view any of the documentation.

Some of the documents included on the CD are:

**FM100 Hardware Manual** – an abbreviated bilingual (English and German) version of the FM100 hardware manual containing basic usage information, beep codes and LED codes.

**FM200 Hardware Manual** – an abbreviated bilingual (English and German) version of the FM200 hardware manual containing basic usage information, beep codes and LED codes.

**Network Configuration Guide** – intended for network administrators only, explains how to configure the Fleet Manager 2002 software to run on a network.

**What's New in Fleet Manager 2002 Professional** – a must read for all who are upgrading from the previous release of Fleet Manager software. Describes the new features and improvements made in this version.

---

## Getting Started

### Step 1. Running the program

The installation program also creates a shortcut to the Fleet Manager 2002 program itself as well as a shortcut to the Fleet Manager Help file.

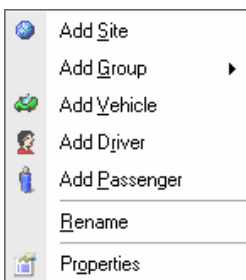


Click on the Fleet Manager 2002 short cut to launch the Fleet Manager 2002 program. The Fleet Manager 2002 splash screen will be displayed whilst the program is busy loading.

### Step 2. Registration

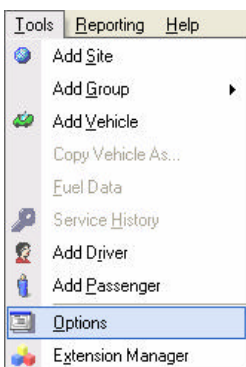
As the Fleet Manager 2002 program loads, a message may be displayed saying that the software is not registered. If you require any assistance with registering you should contact the dealer that supplied your software.

### Step 3. Customising the program

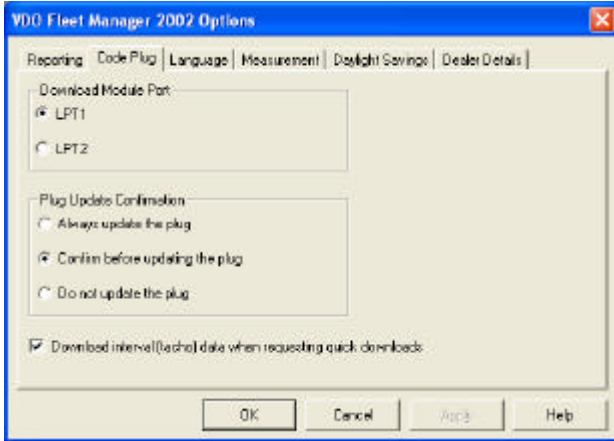


Next you should replace the default organisation name (My Organisation) with your organisation's name. To do this, right click on My Organisation in the top left-hand corner of the tree-view. Click on the Properties menu item. The Organisation property page will be displayed. Enter your organisation's name in the appropriate field and click the Ok button.

You should repeat the above steps to rename the default Vehicle and Driver Configuration Groups, Vehicle and Driver Reporting Groups and Site appropriately.

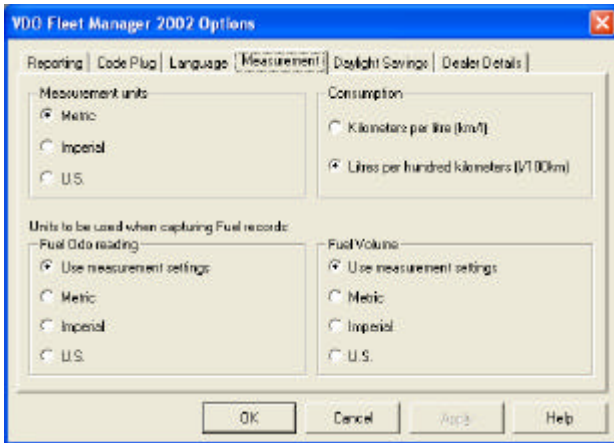


Click on the Tools menu at the top of the Fleet Manager 2002 main window and click on the Options menu item.

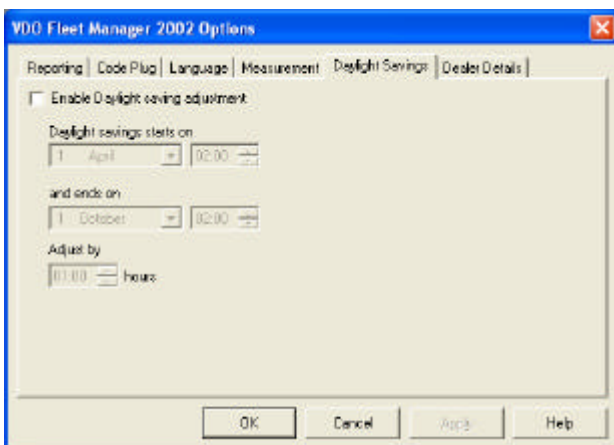


The Options dialog will be displayed.

Click on the Code Plug tab. Ensure that the download module is plugged into the first or second printer port on our computer (LPT1 or LPT2 respectively). Select the appropriate port by clicking on its radio button.



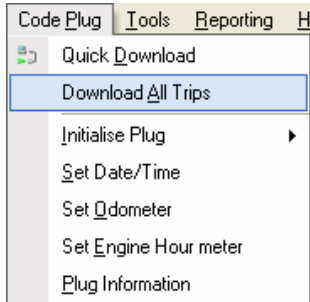
Click on the Measurement tab. Choose the appropriate measurement units (Metric, Imperial or U.S.).



Click on the Daylight Savings tab. If you have daylight savings in your country, click the Enable Daylight Savings check box and enter the start, end and adjustment times.

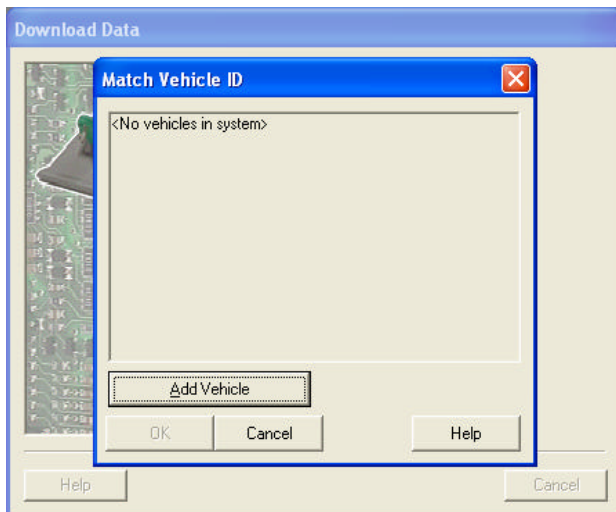
Click on the Ok button to save your preferences.

## Step 4. Download trips and events



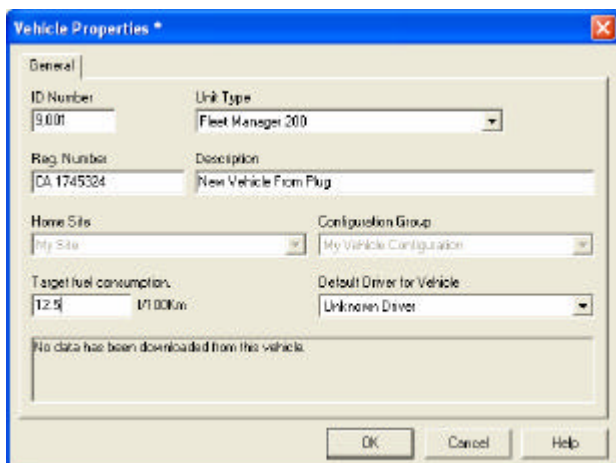
Insert the green code-plug from one of your FM100 or FM200 equipped vehicles into the download module.

Click on the Code Plug menu at the top of the Fleet Manager 2002 main window and click on the Download All Trips menu item.

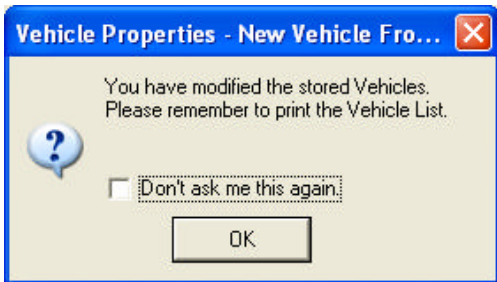


You should see the LED on the download module flash as it reads information from the code-plug. The Download Data wizard will be displayed indicating download progress.

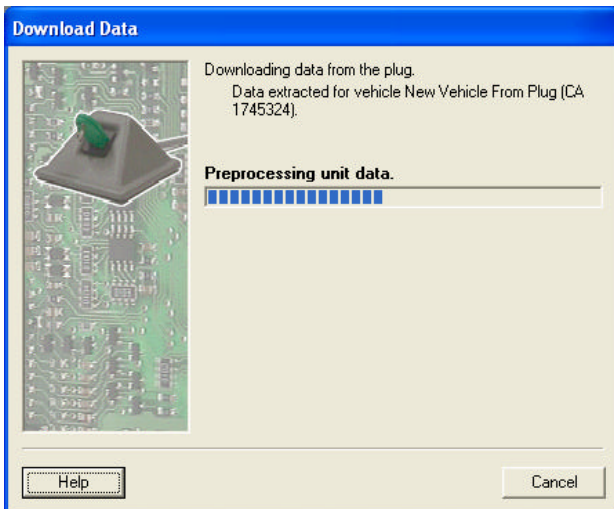
After a while, the Match Vehicle ID dialog will be displayed. Click the Add Vehicle button.



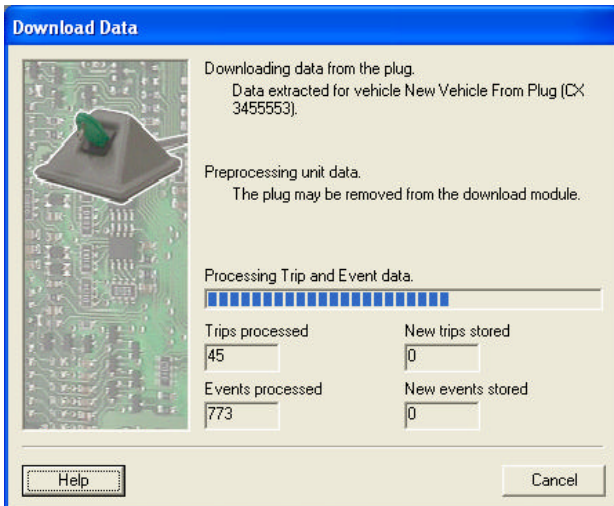
The Vehicle Properties dialog will be displayed. Enter the vehicle registration number and description. **Do not alter the contents of the ID number field.** Click the Ok button. Additional tabs will be added to the Vehicle Properties dialog. Click the Ok button a second time to save the vehicle record in the database with default configuration settings (see Appendix A of this document). You can customise the vehicle's configuration settings at a later stage.



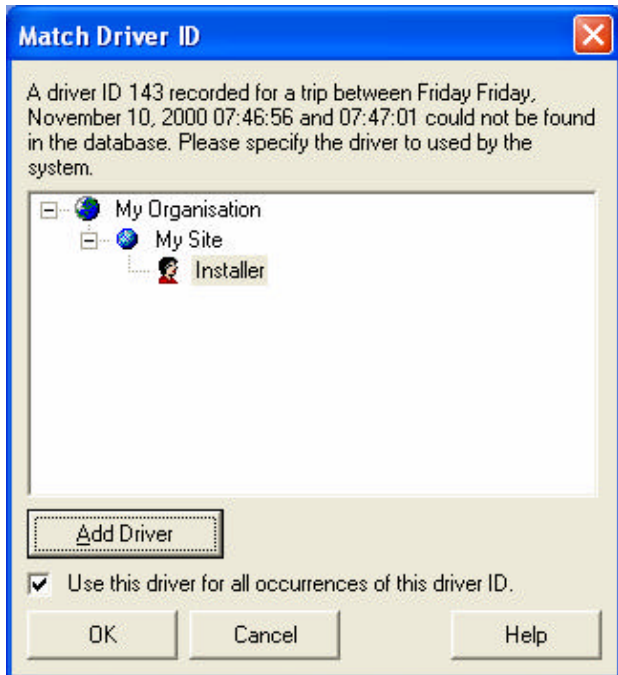
After clicking OK you will be returned to the Match Vehicle ID dialog with this message. Click OK and ensure that the new vehicle you have just added is selected by clicking on its description. Click the Ok button to continue the downloading process.



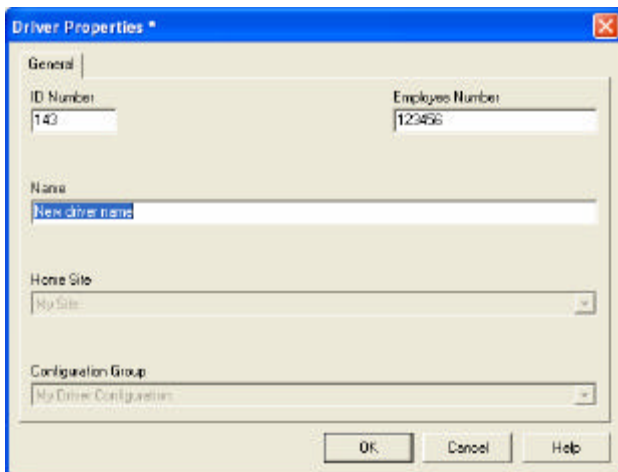
The pre-processing phase of the download will begin and progress will be displayed.



Once the pre-processing phase of the download is completed, the processing phase will begin. Once again, progress will be displayed.



After a while, the Match Driver ID dialog will be displayed. Make a note of the date and time of the trip described in the label at the top of the dialog. Click the Add Driver button.



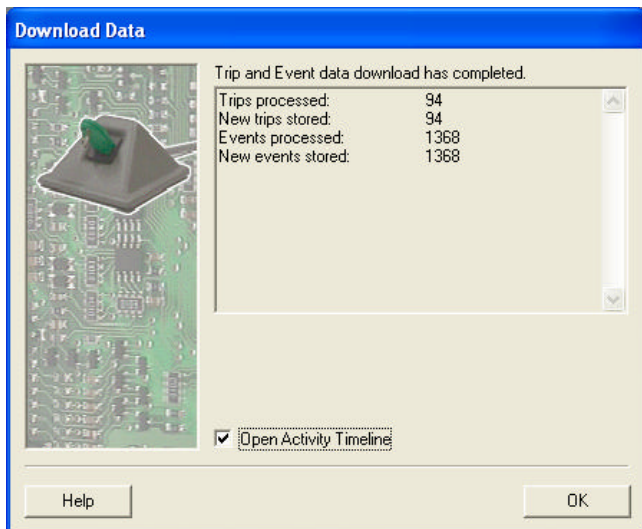
The Driver Properties dialog will be displayed. Enter the employee number and name of the driver who drove the vehicle on the date and time displayed on the Match Driver ID dialog. **Do not alter the contents of the ID number field.** Click the Ok button.



After clicking OK you will be returned to the Match Driver ID dialog with this warning message. Click OK and ensure that the new driver you have just added is selected by clicking on its description. Click the OK button to continue the pre-processing phase.

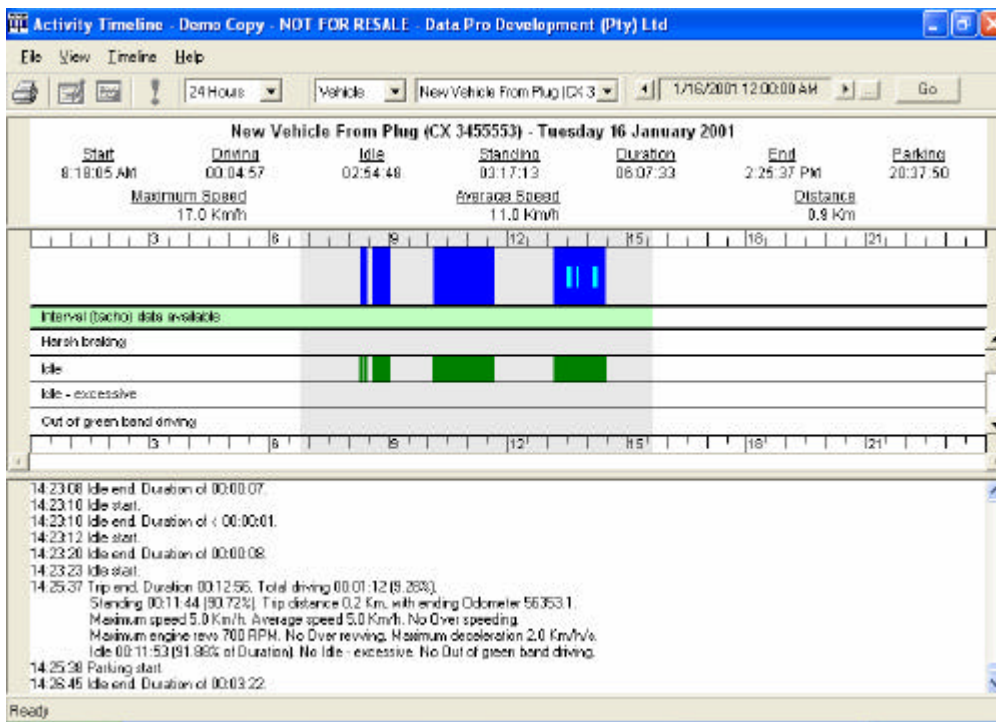
The Match Driver ID dialog will be displayed more than once if more than one blue plug was used. Repeat the above steps as necessary.





When downloading is finished, summary information will be displayed. Ensure that the Open Activity Timeline check box is checked and click the Ok button.

## Step 5. Analyse the trips and events



The Activity Timeline form will be displayed, showing a twenty-four hour graphical view trips and events.

Press the F1 key to open the Fleet Manager 2002 context sensitive help for an explanation of how to use the Activity Timeline's powerful features to analyse the data.

## Troubleshooting

There may be known issues that have been encountered when downloading information from the green code-plug. These issues, solutions and/or workarounds will be described in knowledge base articles, which can be located on the Control Instruments web site at <http://www.cidev.com/>.

To access the knowledge base, click on 'Search the Knowledge Base' in the menu bar at the top of the home page. The knowledge base search page will be displayed in your browser. Enter "FM2002 install" in the keywords field (without the quotes), select "all" in the "Show me" combo-box and click the search button.

**Please note: The knowledge base search facility does not work correctly with Microsoft Internet Explorer version 3.x.**

If you are not able to locate an article describing the problem you are experiencing, please contact the distributor. However, in urgent cases where a timeous solution cannot be reached it is possible to log a request directly with the development teams via this web site.

To log a support request, click on the "Support" link in the menu bar at the top of the home page. Enter your details and the details of the problem you are experiencing before clicking the Submit button. Please enter the exact description of any error messages that are displayed. The more information you are able to provide, the easier it will be for our developers to locate and correct the problem.



---

## Appendix A: Default vehicle configuration settings

When you add a vehicle record using the Match Vehicle ID dialog (documented in Step 4 above), you need only supply a registration number and description. If the vehicle unit is an FM200, the vehicle record will be added with the following default configuration settings. If the vehicle unit is an FM100, the same default configuration settings will be used where appropriate.

### Unit Settings

<b>Arming Delay:</b>	00:05:00	
<b>Standing Delay:</b>	00:02:00	
	FM200 only	
<b>Disarm Buzzer Action:</b>	Sound for 10 seconds	
<b>Input Parameters:</b>	F1 - Road Speed - Units = Km/h	
	F2 - Engine RPM - Units = RPM	
	F3 - * Not Connected *	} FM200 only
	I1 - * Not Connected *	
	I2 - * Not Connected *	
	I3 - * Not Connected *	
	I4 - * Not Connected *	

### Battery Disconnection Event

	FM200 only
<b>Record After:</b>	00:00:00
<b>Event Type:</b>	Notification only
<b>Alarm After:</b>	00:00:00
<b>Relay After:</b>	No Relay
<b>Recording Options:</b>	System Override Plug does NOT disable Alarm and Relay Start Odometer of occurrence is NOT recorded End Odometer of occurrence is NOT recorded Pulse count from F3 parameter (fuel, etc.) is NOT recorded
<b>Record:</b>	Latest value of Battery Disconnect Date/Time
<b>Download Message:</b>	Battery was disconnected from unit
<b>Trigger When:</b>	Battery Disconnect duration > 120 sec

### Harsh Acceleration Event

	FM200 only
<b>Record After:</b>	00:00:00
<b>Event Type:</b>	Summarise only
<b>Alarm After:</b>	No Alarm
<b>Relay After:</b>	No Relay
<b>Recording Options:</b>	System Override Plug does NOT disable Alarm and Relay Start Odometer of occurrence is NOT recorded End Odometer of occurrence is NOT recorded Pulse count from F3 parameter (fuel, etc.) is NOT recorded
<b>Record:</b>	Maximum value of Acceleration
<b>Download Message:</b>	
<b>Trigger When:</b>	Acceleration > 8 Km/h/s

## Harsh Braking Event

**Record After:** 00:00:00  
**Event Type:** Summarise only  
**Alarm After:** No Alarm  
**Relay After:** No Relay  
**Recording Options:** System Override Plug does NOT disable Alarm and Relay  
Start Odometer of occurrence is NOT recorded  
End Odometer of occurrence is NOT recorded  
Pulse count from F3 parameter (fuel, etc.) is NOT recorded  
Maximum value of Deceleration

**Record:**  
**Download Message:**  
**Trigger When:** Deceleration > 15 Km/h/s

## Idle Event

**Record After:** 00:00:00  
**Event Type:** Summarise only  
**Alarm After:** No Alarm  
**Relay After:** No Relay  
**Recording Options:** System Override Plug does NOT disable Alarm and Relay  
Start Odometer of occurrence is NOT recorded  
End Odometer of occurrence is NOT recorded  
Pulse count from F3 parameter (fuel, etc.) is NOT recorded

**Record:**  
**Download Message:**  
**Trigger When:** Ignition On True AND  
Road Speed < 5 Km/h AND  
Engine RPM > 0 RPM AND  
Engine RPM < 1500 RPM

## Excessive Idle Event

**Record After:** 00:03:00  
**Event Type:** Summarise only  
**Alarm After:** No Alarm  
**Relay After:** No Relay  
**Recording Options:** System Override Plug does NOT disable Alarm and Relay  
Start Odometer of occurrence is NOT recorded  
End Odometer of occurrence is NOT recorded  
Pulse count from F3 parameter (fuel, etc.) is NOT recorded

**Record:**  
**Download Message:**  
**Trigger When:**

Ignition On True AND	}	FM200
Road Speed < 5 Km/h AND		
Engine RPM > 0 RPM AND		
Engine RPM < 1500 RPM		
Road Speed < 5 Km/h AND	}	FM100
Engine RPM > 200 RPM		

## Out of Green Band Driving Event

**Record After:** 00:00:00  
**Event Type:** Summarise only  
**Alarm After:** No Alarm  
**Relay After:** No Relay  
**Recording Options:** System Override Plug does NOT disable Alarm and Relay  
Start Odometer of occurrence is NOT recorded  
End Odometer of occurrence is NOT recorded  
Pulse count from F3 parameter (fuel, etc.) is NOT recorded

**Record:**

**Download Message:**

**Trigger When:** ( Engine RPM < 2000 RPM OR Engine RPM > 4500 RPM ) AND  
Road Speed > 25 Km/h

## Over Revving Event

**Record After:** 00:00:00  
**Event Type:** Summarise only  
**Alarm After:** No Alarm  
**Relay After:** No Relay  
**Recording Options:** System Override Plug does NOT disable Alarm and Relay  
Start Odometer of occurrence is NOT recorded  
End Odometer of occurrence is NOT recorded  
Pulse count from F3 parameter (fuel, etc.) is NOT recorded  
**Record:** Maximum value of Engine RPM

**Download Message:**

**Trigger When:** Engine RPM > 4500

## Over Speeding Event

**Record After:** 00:00:00  
**Event Type:** Summarise only  
**Alarm After:** No Alarm  
**Relay After:** No Relay  
**Recording Options:** System Override Plug does NOT disable Alarm and Relay  
Start Odometer of occurrence is NOT recorded  
End Odometer of occurrence is NOT recorded  
Pulse count from F3 parameter (fuel, etc.) is NOT recorded  
**Record:** Maximum value of Road Speed

**Download Message:**

**Trigger When:** Road Speed > 120 Km/h